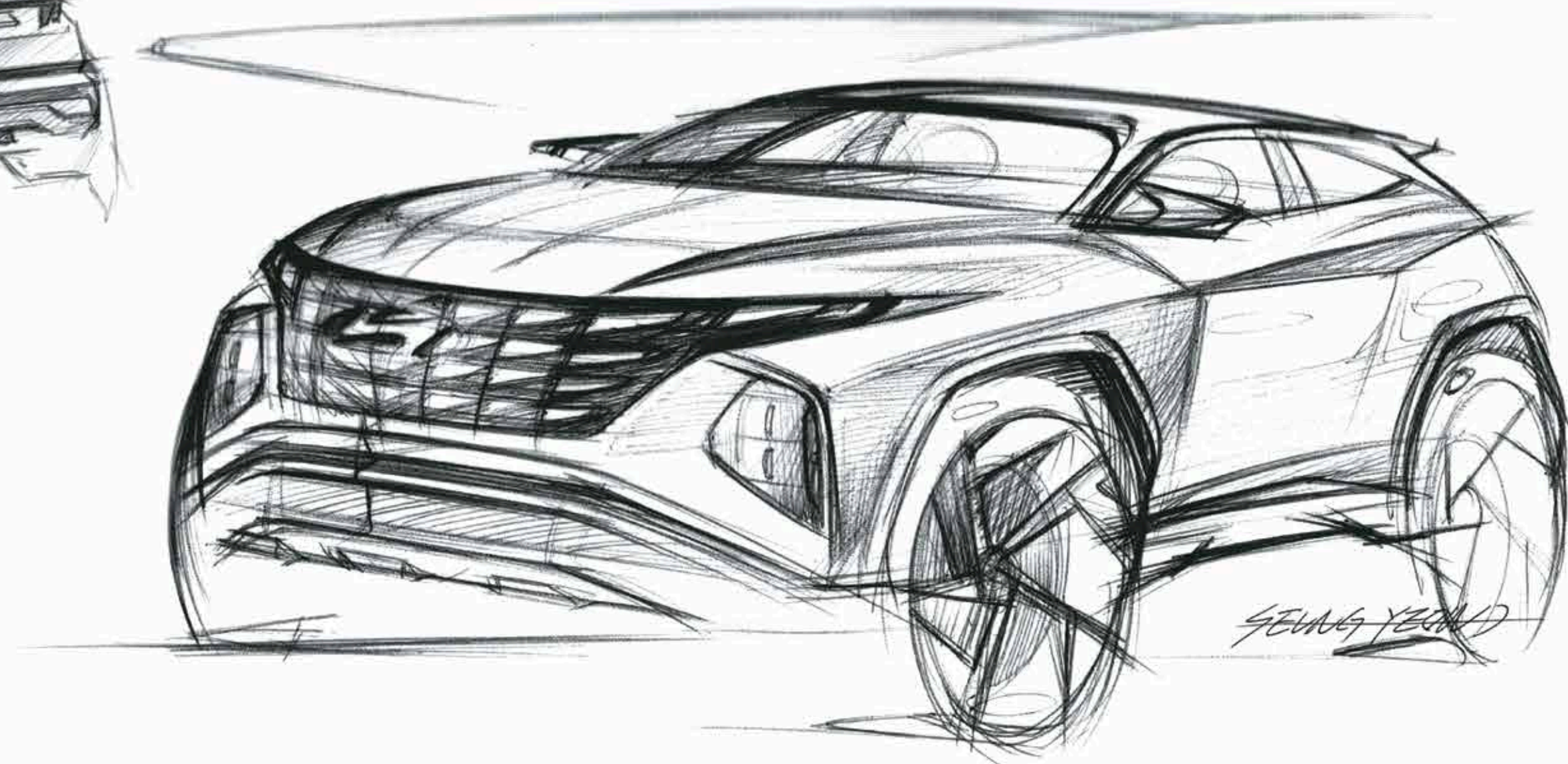
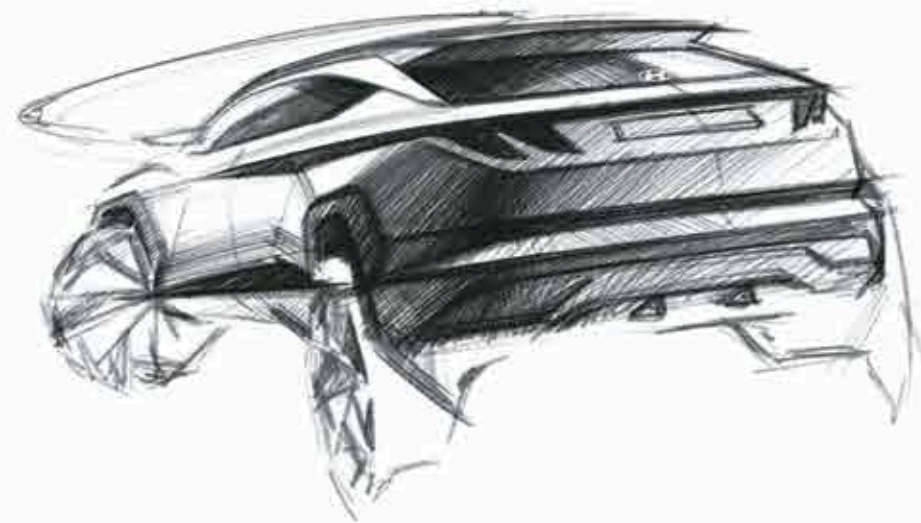


# TUCSON



## Parametric, progressive design.

The all-new Hyundai TUCSON is a revolution in design. Sophisticated and progressive, it's the SUV taking modern aesthetics to the next level. Truly, the cutting-edge SUV design with futuristic technology.



## Sensuous Sportiness.

“We didn’t want to create just another SUV  
We wanted to Create Something ICONIC”

---

Hyundai Motor Company Design Team

## Next drives Now.

For some, success is not a finishing line but a starting point. The all-new Hyundai TUCSON is their SUV of choice. With looks that redefine elegance and are complimented with state-of-the-art technology that stands apart. Add the unique Hyundai SmartSense features and it is virtually intuition on wheels. Truly, the next gen of SUVs.



# The lights have it all.

With the advanced half-mirror lighting technology, the all-new Hyundai TUCSON boasts of parametric hidden LED DRLs which give it a unique presence on the road. When switched on, they show wing like shapes; when switched off, they integrate seamlessly with the parametric grille. The wide connecting LED tail lamps continue the dynamic progressive design of the rear.

Headlight garnish

Headlight lens bracket

Headlight outer lens

Headlight reflector & LED assembly

Headlight housing





# Flawless, timeless, captivating design.

The all-new Hyundai TUCSON is designed to invoke awe. Its 3D dark chrome parametric front grille and jewel-like surfaces are a reflection of futuristic design. The parametric hidden LED daytime running lights ensure it stands out wherever it goes.



R18 (D=462 mm)  
Diamond cut alloy wheels



Connecting LED tail lamps



Dark chrome parametric front grille with parametric hidden LED DRLs, LED MFR headlamps & positioning lamps



Panoramic sunroof

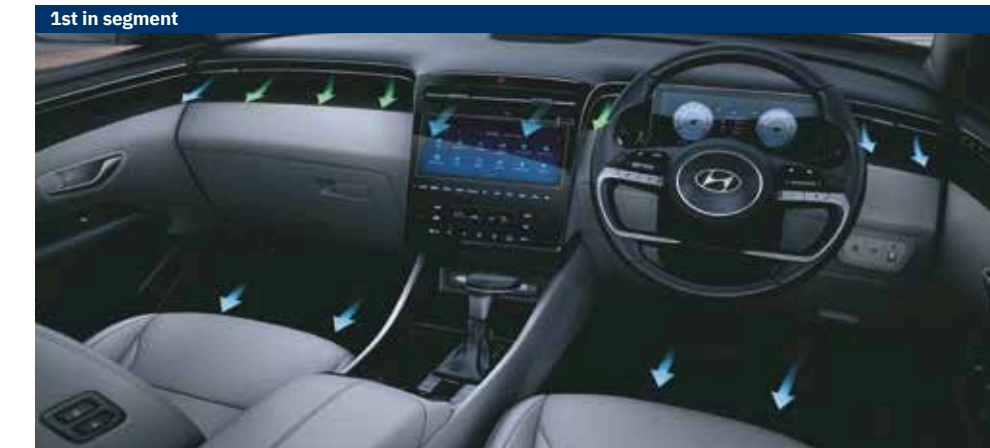
Other features : Glass integrated Hyundai logo | Shark fin antenna | Roof rails | Rear spoiler with hidden wiper and washer



Premium black and light grey dual tone interiors

## Exquisite in every way.

Step into the all-new Hyundai TUCSON and experience sheer luxury. The driver side houses a 26.03 cm (10.25") floating type digital cluster which builds on the SUVs advanced and modern design characteristics. Hit the right spot in your driving position with 10-way power adjustable ventilated & heated driver seat with memory function. The epitome of comfort, the embodiment of elegance.



Multi air mode



26.03 cm (10.25") Floating type digital cluster



10-way power adjustable driver seat with lumbar support & memory function



Front ventilated & heated seats

Other features : Premium leather# upholstery | Door pocket lighting (1st in segment) | 8-way power adjustable passenger seat | 64 colour ambient lighting (Best in segment) | Dual zone FATC with auto defogger

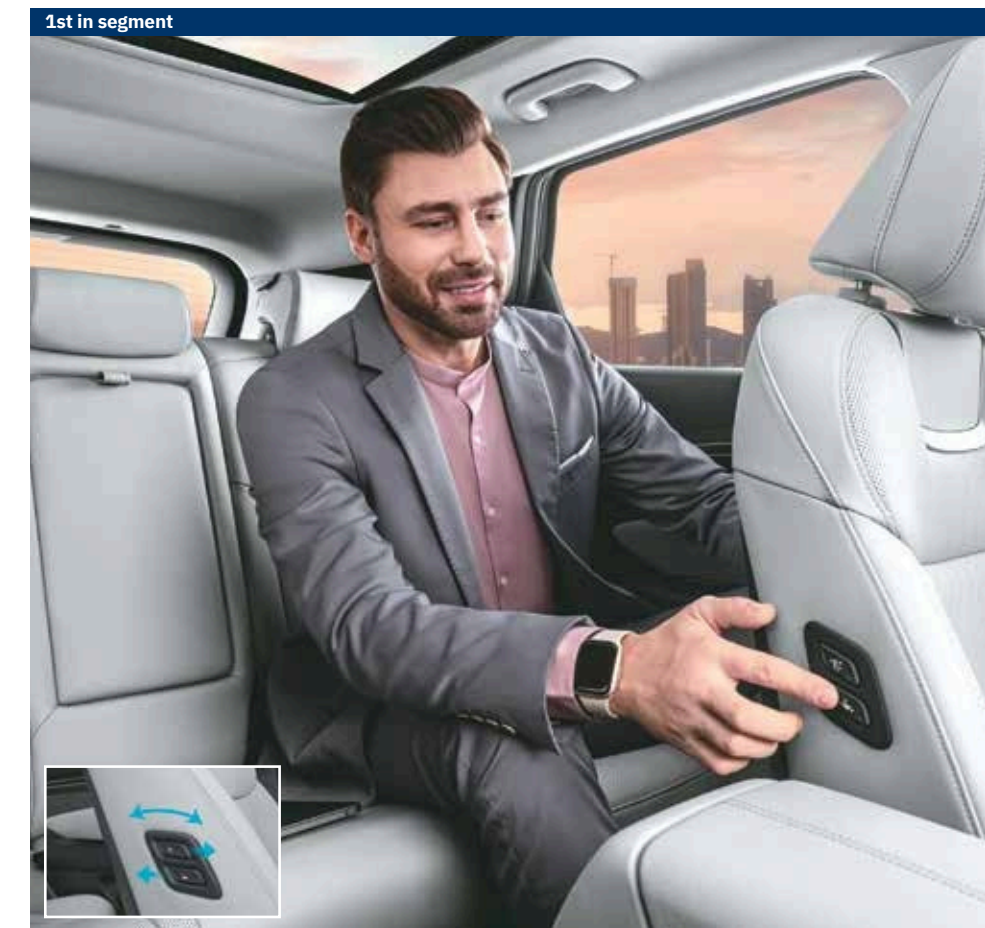
\*Leatherette



Longest wheelbase in the segment: Superior legroom and kneeroom

# Passengers ride first-class.

Travel in first-class comfort on every ride. Lounge comfortably in the 2nd row seats with reclining function. Need more space? Simply use the passenger seat walk-in device to make more legroom.



1st in segment  
Passenger seat walk-in device



2nd row seat folding - boot lever



Hands free smart power tail gate with height adjustment

Other features : 2<sup>nd</sup> row seats with reclining function



"Alexa, turn on my car's AC."

Home to car (H2C) with Alexa\* (1st in segment)

\*T&C apply.

# Leading-edge technology.

Connections go beyond in the all-new Hyundai TUCSON. The 26.03 cm (10.25") HD audio video navigation system will always get an encore. The home to car (H2C) with Alexa allows you to stay connected with your car from home, while 60+ BlueLink connected features ensure you're connected with the world while on the move.



Embedded voice commands



Bose premium sound 8 speaker system



26.03 cm (10.25") HD audio video navigation system



10 Regional languages infotainment



Ambient sounds of nature

Other features : Over-the-air update (infotainment system & map) | Smartwatch connectivity



Forward collision - avoidance assist (FCA)

Blind-spot view monitor (BVM)

Driver attention warning (DAW)

Smart cruise control with stop and go (SCC w/ S&G)

Forward collision warning (FCW)

Lane following assist (LFA)

High beam assist (HBA)

Blind-spot collision avoidance assist (BCA)



# Hyundai SmartSense Best in segment

Advanced Driver Assistance System (ADAS) uses automated sensing technology with radars, sensors and cameras to detect obstacles on the road & respond with countermeasures for impact avoidance. Thus offering comprehensive protection on the road. The all-new Hyundai TUCSON comes with cutting-edge autonomous level 2 ADAS system for a smart & intuitive driving experience.

Lane keeping assist (LKA)

Safe exit warning (SEW)

Rear cross traffic collision avoidance assist (RCCA)

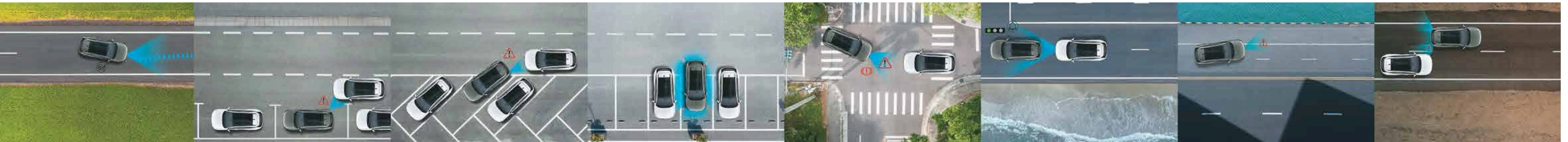
Surround view monitor (SVM)

Forward collision avoidance assist - junction turning (FCA-JT)

Leading vehicle departure alert (LVDA)

Lane departure warning (LDW)

Blind-spot collision warning (BCW)





Six airbags – Driver, passenger, side & curtain

# The confidence of 60+ safety features

The all-new Hyundai TUCSON is loaded with advanced tech that ensures a better driving experience and a range of features to ensure your safety.



All four disc brakes



Electronic stability control (ESC)



TPMS (Highline)



Vehicle stability management (VSM)



Electric parking brake & front parking sensors



Hill-start assist control (HAC)

Other features : Downhill brake control | Rain sensing wipers | Parking assist (Front & rear parking sensors) | Reverse parking camera with steering adaptive guidelines | Child seat anchor (ISOFIX)

# A supreme performance.

The all-new Hyundai TUCSON is ready for everything. HTRAC empowers you to take on challenging roads while different modes ensure all your journeys go smooth.

## Nu 2.0 l petrol engine

Max power **114.7** kW (156 PS) / 6 200 r/min

Max torque **192** Nm (19.6 kgm) / 4 500 r/min



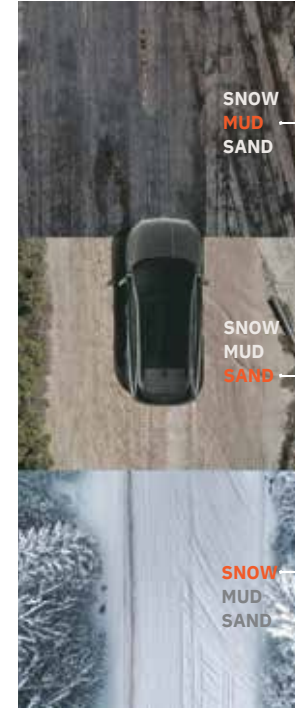
## R 2.0 l diesel engine

Max power **137** kW (186 PS) / 4 000 r/min  
(Best in segment)

Max torque **416** Nm (42.42 kgm)  
/ 2 000-2 750 r/min (Best in segment)



## Multi terrain modes



## Modes:

**HTRAC All-Wheel Drive:** Trade the tarmac for the road less taken. HTRAC continuously analyzes your speed and road conditions. It automatically optimizes torque distribution among the four wheels and will apply the brakes, if necessary, to ensure maximum traction and directional stability.

**Multi terrain modes:** With a quick flick of the switch, you can adjust the powertrain to suit challenging road and weather. SNOW, MUD and SAND settings ensure you are getting maximum traction when the going gets really rough.

**Drive mode select:** With Drive mode, you get to pick the style suits you best: NORMAL is for relaxed everyday driving while ECO gives you optimal fuel efficiency. SPORT is for quicker acceleration, and SMART selects the proper driving mode amongst ECO, SPORT and NORMAL by judging the driver's driving habits.

## Drive mode select themes:



Eco



Normal



Sport



Smart

Transmission options: 6 Speed & 8 speed automatic transmission



# Exterior colours



Atlas white



Abyss black



Amazon grey



Starry night



Fiery red

# Dual tone options



Atlas white with Abyss black roof

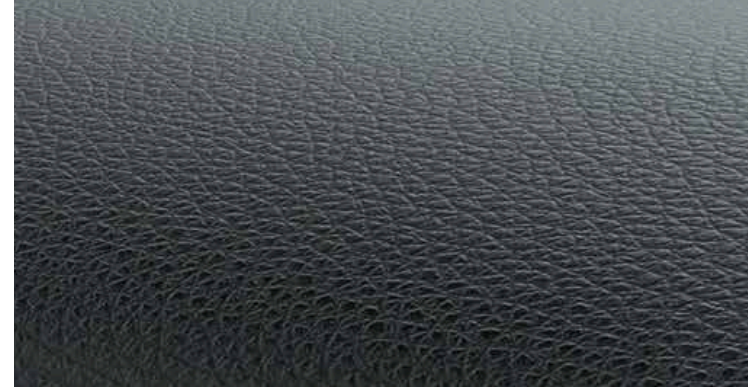


Fiery red with Abyss black roof

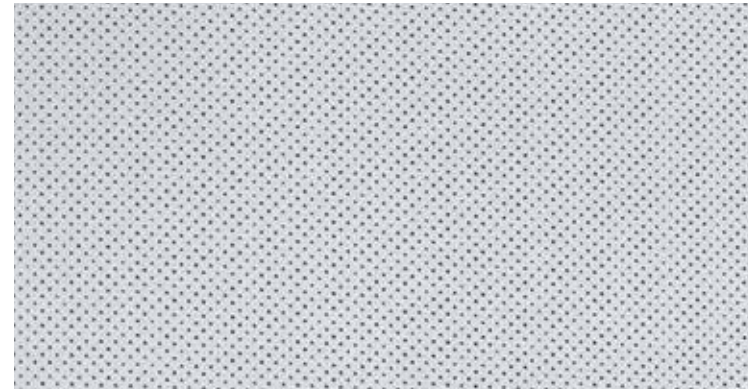
# Peace of mind



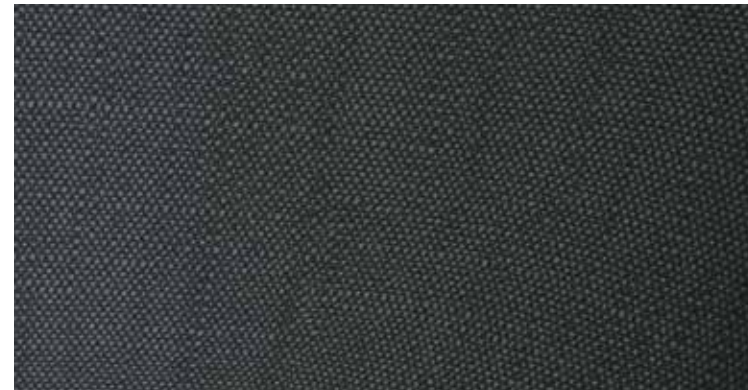
# Superior tones of premium interiors



Black



Light grey



Melange

\*T&C apply.





# A Hyundai for every occasion.

Whether it's city roads, mountain drives, or outdoor adventures, Hyundai offers something that suits your style.

## Hatchback



Grand i10 NIOS.  
More to life.



i20.  
Born magnetic.



i20 N Line.  
It's time to play.



AURA.  
Feel the pride.



VERNA.  
Futuristic. Ferocious.



IONIQ 5.  
Power your world.

## Sedan

## SUV



EXTER.  
Think outside. Think EXTER.



VENUE.  
Live the Lit life.



VENUE N Line.  
It's time to play.



CRETA.  
Undisputed. Ultimate.



CRETA N Line.  
Live unleashed.



ALCAZAR.  
Live the grand life.



TUCSON.  
Next drives Now.

# A Hyundai for every Indian.

There's more to Hyundai than the quality of driving comfort. Hyundai offers a host of experiences and features, offering something for everyone.

Here's a look at more reasons to pick Hyundai.

### Enhanced Safety



6 Airbags, seatbelt reminder and 3-point seatbelt standard All cars. All variants.

Hyundai SmartSense

ADAS with upto 21 features\*

\*IONIQ 5, TUCSON, VERNA, CRETA, CRETA N Line, VENUE N Line and VENUE.

### Diverse choices



Wide choice of transmission: MT, AMT, AT, IVT and DCT



Multiple fuel options  
Petrol, Diesel, CNG and Electric



Widest range of SUVs  
\*EXTER, VENUE, VENUE N Line, CRETA, CRETA N Line, ALCAZAR, TUCSON and IONIQ 5

### Peace of mind



1 363 Sales points



1 549 Service touch points



Lowest cost of maintenance

### Advanced technology



5 Lakh+ connected cars  
60+ connected features



Home to car with Alexa

### Future ready



End-to-end online buying experience



Multiple mobility solutions: Personal, Subscription, Leasing



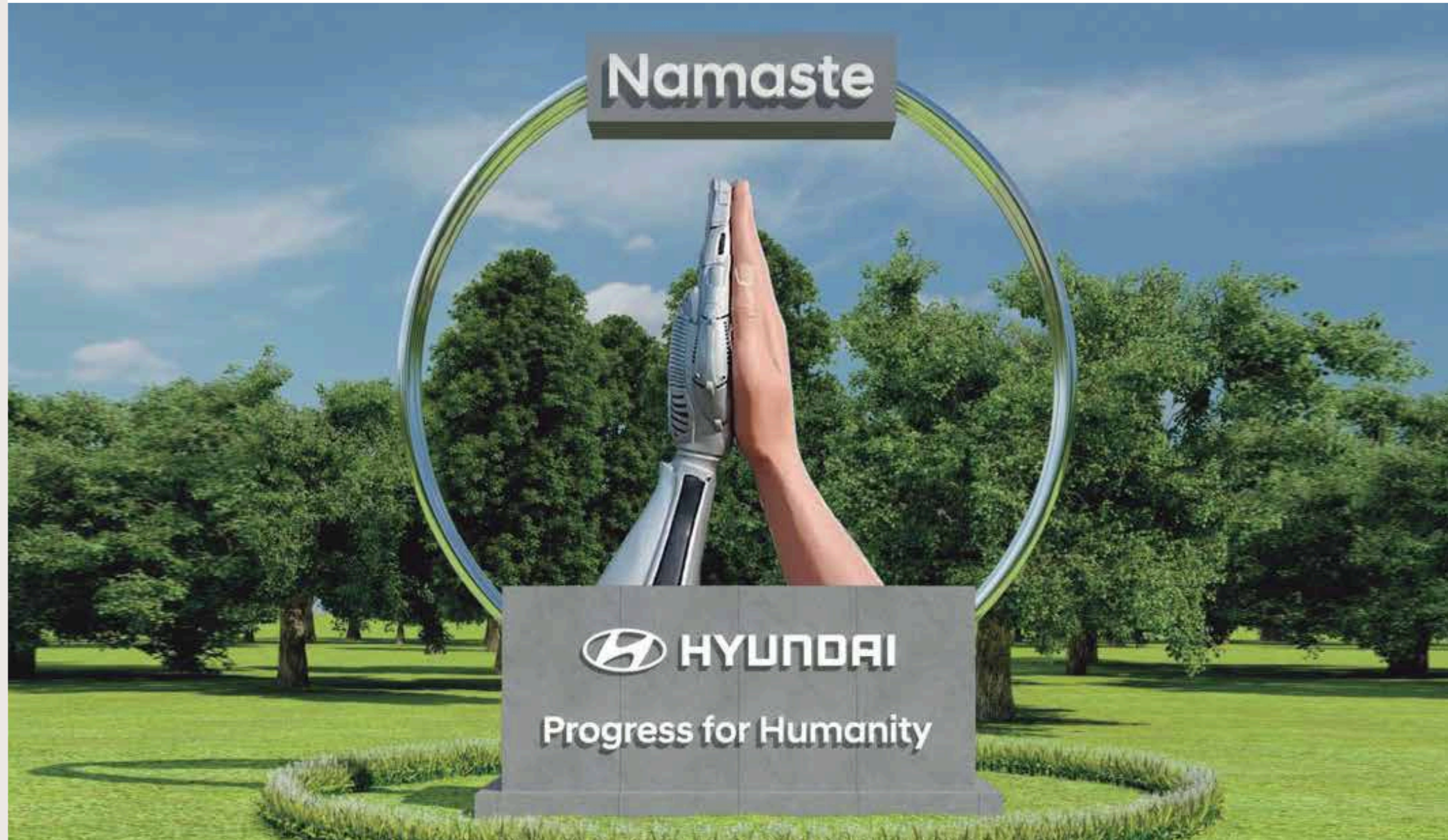
MyHyundai app for additional benefits and experiences.

\*T&C apply.

As on 31st Mar'24

## Humanity joins hands with technology to achieve Progress for Humanity.

Hyundai Motor India has installed an iconic "Namaste" installation near the IGI airport in New Delhi. This 30-foot tall installation makes for an inspiring spectacle. It underlines the fact that human values need to go hand in hand with technological advancements to make Progress for Humanity a reality. A universal greeting, Namaste symbolizes respect, humility, harmony, and accord. The robotic hand symbolizes futuristic innovations to enrich our consumers' lives. The human hand in the wheel represents the integral role of humanity. The "Namaste" installation is a true testament of Hyundai's commitment to India and its global vision "Progress for Humanity".





## HANS HYUNDAI

**ADDRESS** : [Unit-4, TSG Complex, 69/1A, Najafgarh Rd, Moti Nagar, Block C, Crossing, New Delhi, Delhi, 110015](#)

**CONTACT US** : +91-844735009

**Website** : <https://hanshyundai.com/>

### Peace of mind

my Hyundai app | Hyundai Click to Buy | **3** Unlimited<sup>\*\*\*</sup> Kilometer Warranty | **7** Extended Warranty<sup>\*\*</sup> | **3** Road Side Assistance (RSA)<sup>\*</sup>

**5** Shield of Trust<sup>\*</sup> Running Repair Package<sup>\*</sup> | **5** Shield of Trust Super<sup>\*</sup> Maintenance Package<sup>\*</sup>

\*Terms & Conditions apply. Features & specifications shown may vary or not be part of standard fitment & are subject to change without prior notice. Some of the features, specifications or equipment illustrated or described herein may not be standard fitment and may be available at additional cost. Hyundai Motor India reserves the right to change specifications, colour, equipment and schemes at any time without prior notice. Segment is defined based on SUV dimensions of overall length between 3 800 - 3 900 mm. • \*\*Warranty upto 3 Years or unlimited km whichever occurs earlier. • ^Upto 7 years extended warranty is applicable only for petrol variants. The CNG kit is warranted directly by CEV Engineering (P) Ltd. • Amazon, Alexa and all related logos are trademarks of Amazon.com, Inc. or its affiliates. \*\*\*Alexa Amazon Echo device is not a standard car accessory & customer needs to purchase from third party. Actual Echo device may differ from the one shown here. Hyundai BlueLink Amazon skill only works in India and can be interacted in English & Hindi only. Alexa Skill functions only in select Hyundai car(s) and depends on your device compatibility, software and availability of network and device internet. Functionality of BlueLink depends on adequate power supply and uninterrupted network connectivity to infotainment system. The BlueLink system is designed in such a way that it makes vehicle theft difficult subject to adequate power supply, uninterrupted network connectivity to informant system and all circuits and battery connection are untampered. • Technical specifications have been rounded-off to the nearest value. • Deployment of airbags depends upon number of factors explained in detail in owner's manual, available on Hyundai website. • The colour plates shown herein may vary from the actual colour of the car due to the limitations of the printing process. The black shade on glasses is due to lighting effect. • Visit your nearest Hyundai dealership for more details. Hyundai urges you to follow traffic rules – these are meant to keep you safe on roads. The brochure contains limited information about the vehicle and the appearance/ colour or specification shown in brochure may vary from actual product, hence it is suggested